

Community News for White Waltham and Woodlands Park

Welcome to this special Facebook edition of Community News for our local area of White Waltham and Woodlands Park.

In each edition we hope to bring you news from the local area; this issue there is an update from our local Parish Councillors and from Woodlands Park School. In other issues there will something from our other local Primary School, or our local Borough Councillors; we will also include articles and information about what's going on at White Waltham Church. In amongst all of that you may find a puzzle or activity to keep you going during lockdown, along with advertising for local businesses - please do support them at this challenging time.

If you have an article or advert you would like included, please get in touch. Details are on the final page.

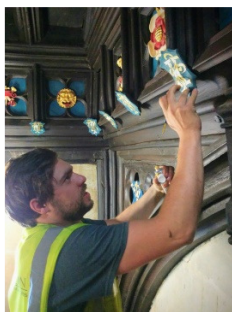
News from White Waltham Parish Council

During these strange lockdown weeks have you, like me, experienced the joy of exploring the byways, bridleways and circular walks that wend their way across our parish? If you have, I hope one of them has taken you up past St Mary's Church where you'll have seen that that our 15th century stocks and their canopy are finally back in place. Many people have asked why they were away for so long. This was because they're a Grade 2 listed building and had to be repaired by a qualified restorer rather than an enthusiastic parish councillor with a hammer, some superglue and a pot of Cuprinol!



The stocks, along with their protective canopy and iron railings, were badly damaged by a driver in November 2018. A diligent resident heard the crash and went to investigate; thanks to him and the tenacious efforts of Paula, our Parish Clerk, we've been able to claim back the £6000 for the whole repair from the driver's insurance – a great result for the community!

So, what does restoring a piece of craftsmanship like this entail? Skill, experience, patience, love, a willingness to work with what remains and search out materials that are sympathetic with the original for starters. Luke Robinson, our restorer, became an apprentice with a Reading firm when he was 19. He's been carrying out specialist restoration for 17 years now, using



his talents in places like Hampton Court Palace and on the hammerbeam roof in Christ Church Hall in Oxford as well as in listed old homes that have been devastated by fire or flood. When presented with our stocks he started out by taking them apart to assess the damage to each part and identify the materials and fixings so he could plan the repair. He looked through archives to find photos that showed how the stocks looked decades ago. After that he sourced replacement materials that were closest to the original. In our case he had to use French

oak as there is very little English oak available now. The replacement wood had to be shaped carefully, attached to the original and then blended in and softened with hand tools so it integrated with what had survived. The original iron bolts and metalwork had to be straightened. Next, Luke had to fix the pieces together using the bolts and wooden pegs. Finally, he toned down the colour, as new oak is pale beige and weathered oak is very dark. He used modern, water-based stains for this, layering them carefully to get the best possible match. The protective canopy and railings had to be repaired as well though they are not part of the original listed structure.

The purpose of the stocks and the whipping post was to expose anyone punished in this way to the full force of community disapproval. This was the 15th century physical equivalent of a barrage of ‘not likes’ on social media. Quite effective I imagine!

Here is the English Heritage listing:

Stocks and whipping post. Originally late C15, rebuilt 1979. Wooden stocks for 2 offenders, with metal arm holders on whipping post with padlock and chain. Covered by C20 wide gable plank roof on 2 oak posts braced to wall plate. Enclosed by railings with spiked bars and small padlocked gate in north corner. A complete example. Listing NGR: SU8544977530

The planned grand re-opening has had to be postponed but we'll let you know when it's rescheduled via the parish website and on the White Waltham Village Association's Facebook page. It's worth noting that the use of stocks as a form of punishment has never been formally abolished. This may be a solution to stopping folk speeding in the parish!

Joking aside, those of you who want more rigorous exercise will be pleased to know that the tennis courts have been open and fully used since mid-April. Here's the link to the page which allows you to book, get coaching or apply for membership (see top navigation bar):

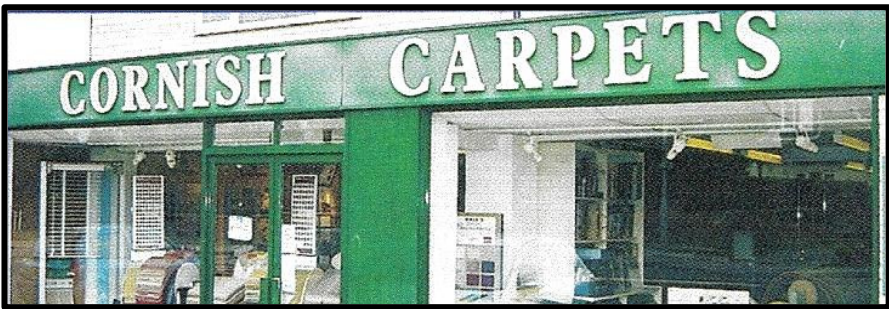
<https://clubspark.lta.org.uk/whitewalthamparishcouncil>



Everything is electronic and the cost for one court for an hour is £6.00. What a splendid way to counteract the effect of all that extra baking! Enjoy both.

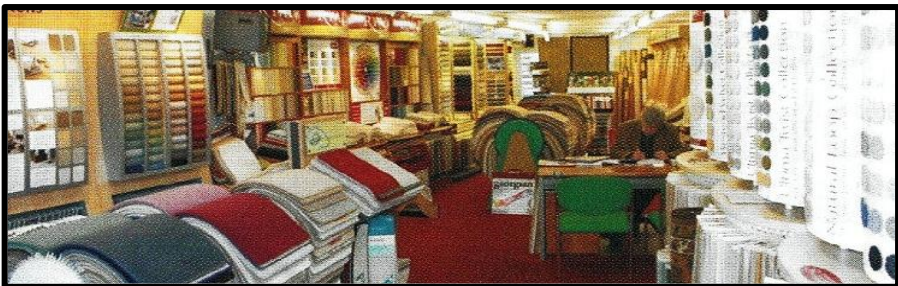
Keep safe and well

Linda Jones (Parish Councillor, White Waltham)



Family business since 1962 – 58 years!

- All stock rolls at greatly reduced prices
 - All major makes supplied
- Roll ends and remnants priced to clear
 - **FREE** estimating and planning
 - Expert fitting service available



**Cornish Carpets, 9 Waltham Road,
Woodlands Park, Maidenhead SL6 3NH**

Tel: 01628 824555

e-mail: getintouch@cornishcarpets.co.uk

website: www.cornishcarpets.co.uk

CORNISH CURTAINS Tel: 01628 824222

Call for a no-obligation quote or design advice

The Vicar's Letter

The Vicarage, Waltham Road
(corner of Foliejohn Way)
Woodlands Park

Dear Friends of the Parish of White Waltham with Woodlands Park,

Welcome to our second 'Community News'; our prayer for these is that we are helped to stay informed and in touch, even in these strange, isolated times. I have been struck by how diverse different people's experience of lockdown has been so let us know how 'Community News' helps and what could be done differently.

Some, like my family, have had to try and work out how to carry on with (and adapt) jobs and training courses while also home schooling 3 children; all without the usual breaks to go to places, without family and friends to visit and help, *and* without being able to just 'get out of the house' in the same way. This has brought pressures and stresses to relationships and to personal well-being. You might call this '**feeling JOYLESS**'.

Others have been on their own, trying to work out what to do with each day, eating on their own and being cut off from their usual activities and meetings. This has brought loneliness and stresses to relationships and personal well-being. You might call this '**feeling LOVELESS**'.

Whilst those in one group may sometimes look longingly at the other group (and there is, of course, some good to be experienced from either situation) we all know that neither situation has been entirely good – this is not how we were made to be.

In one of our bible group discussions, we recently looked at John 15. I am struck by how much of what Jesus said to his friends 2000 years ago, is relevant to how we feel right now.

To the worried disciples, Jesus says, remain in my love by obeying my commands (v9-10). Truly know that I have your best interests at heart as your Lord and Saviour. So much so that my **JOY** will be in you and your **JOY** may be complete (v11). And, here is an example of a command: **LOVE** each other as I have **LOVED** you (v12). We are made and called to **JOY** and **LOVE**.



Jesus also says that as the Father has loved me (Jesus) so have I loved you (v9) and greater love has no-one than this: that he lay down his life for his friends (v13). So God's great plan for us, through the death and resurrection of His son, is that we would remain in His love, knowing complete **JOY and LOVE**.

Now there are practical ways to help each other, and to stay in touch, and we have seen some of that within our community, sometimes quite

inventively! But maybe, through our feelings of joylessness and lovelessness at this time, we are guided back to our Father God who made you for **JOY and LOVE**, and offers you them again through Jesus, to be experienced through the presence of His Spirit, now and forever.

If you want to check this out further do be in touch; we can start another group discussion, or just read some of what Jesus promises together. This can give you the chance to ask questions, bring doubts, air fears, and hear of the work of Trinity God for you.

May you know the love and peace of the Father, through the mission of His Son Jesus, experiencing His presence through His Spirit.

DAVE

Revd Dave Atallah

Tel: 01628 822000 Email: waltham.vicar@btinternet.com

Online Services at White Waltham Church

All our services are pre-recorded and can be watched via our website:

www.stmaryswhitewaltham.org.uk.

On the home page scroll down and click on 'This Sunday's Service'.
You can also catch up previous services from this page.

FOREST GREEN MOTORS & TRAILERS

CAR SERVICING, REPAIRS & DIAGNOSTICS

To most makes and models from small services to brake overhauls
MOTS arranged, fitting of batteries, bulbs and wiper blades

APPROVED MEMBER OF RMI & TRUST MY GARAGE

TRAILER SERVICING & REPAIRS

Parts and trailer accessories
We also supply and fit towbars and towing electrics

**UNIT 4, MANOR FARM, MANOR FARM ROAD,
SHURLOCK ROW, READING, BERKSHIRE. RG10 0PY
TEL: 01189 34 33 79 or 07778 21 77 41**

WHITE WALTHAM GARAGE LTD

WHITE WALTHAM. MAIDENHEAD. BERKS. SL6 3SG
TEL: 01628 823234

REPAIRS & SERVICING

(All Makes and Models, inc. 4 x 4s)

Special Offers on Services

AIRCON RE-GAS from £60.00 + VAT

M.O.T. TESTING STATION

DIAGNOSTIC TESTING

FULL RANGE OF TYRES SUPPLIED & FITTED

LARGE SELECTION OF QUALITY USED CARS

PART EXCHANGES WELCOME

OPENING HOURS

Monday to Friday 07.30 - 17.00

Saturday Car Sales 09.00 - 17.00

Sunday Car Sales 11.00 - 16.00

YOUR LOCAL INDEPENDENT GARAGE

Website: www.whitewalthamgarage.co.uk



GOING ON HOLIDAY? OUT AT WORK?

**The Answer to Professional Pet Care
in your own Home.**

Professional, friendly, flexible, reliable &
tailored pet care services. Registered,
Insured, Police Checked, Uniformed Staff.

**Dog Walking, Cat/Small Pet Visits
Home and Pet Sitting
Pet Home Visits
Pet to Vet-Pet Taxi
Pet Friendly Vehicles
All Animals catered for**

**Call Ron on 01628 627948
maidenhead@petpals.com**



**General building, Extensions
Kitchens & Bathrooms, Roofing
Carpentry, Plumbing, Plastering**

No job too small

Professional & reliable - Reasonable rates - Free estimates
- Fully insured - References and photos available

Robert Cox

bocedevelopments@gmail.com

Home: 0118 934 3613

Mob: 07850 057249

DAVID SHAILES PLUMBERS & DECORATORS

**Showers, Baths,
Sinks, Repairs,
Cylinders, Immersions,
Taps, Washers, Pumps,
Bathroom Suites, Toilets,
Basins & Radiators fitted.
Full Interior & Exterior
Decorating.**

Reliable & Clean.

Find us on Facebook.

i.plumber@btinternet.com

Phone: 0770 8602442

P.J PLUMBERS

24hr Service

Phillip Gillett

P.J.PLUMBERS@live.co.uk

Plumbing/Property Maintenance



NEED A PLUMBING JOB DONE

- Radiators Replaced
- Pumps Changed
- Zone Valves
- Blocked Drains
- Dripping Taps
- Guttering
- Tiling
- Overflows
- Bathrooms Suites
- Toilet Problems
- Shower Fitting
- Cylinders Replaced

All plumbing work covered and fully insured

No call out charged between 6AM and 6PM

GIVE ME A CALL FOR A FREE QUOTE

01628 822942 or 07983 145458

News from Woodlands Park Primary School

As we come to the end of a very strange school year and begin to look forward to the next, we are reflecting on all the wonderful things that have happened in our school community despite the challenges we have faced.



The teachers and support staff have worked extremely hard to ensure all the children, whether they are in school or not, have lots of exciting things to get stuck into. One thing we are all better at is creating learning opportunities which can be enjoyed at home or in school and finding those 'teachable moments' by using those resources that are around us or in the natural environment.

The teachers and Teaching Assistants have been very inventive and the children have all enjoyed online activities with their teachers via Zoom meetings. We have had storytelling, baking sessions, scavenger hunts and art sessions. Woodlands Park has also welcomed a new member of staff... Professor Fizzipop, who has been making fantastic videos to inspire children to carry out science experiments.

We have continued to celebrate the children's work by sending Electronic Merits, Video messages including 'Shout outs' to particular children and Headteacher postcards. I have also been sending home sachets of hot chocolate to children who have gone 'over and above' in their home learning, or learning at school. I am really looking forward to being able to share 'Hot Chocolate With The Head' sessions on a Friday afternoon when we are all back in school properly. Both myself, the teachers and support staff have enjoyed seeing all the work and photographs sent in by parents of all the wonderful things going on at home.



As we welcomed our Nursery, Reception, Year One and Year Six children back into school to join our Key Worker children, we were very fortunate to be gifted three marquees to use as outdoor learning/lunch/play spaces until the end of the school year. These were kindly donated by Tops Marquees as part of a very community spirited act supplying many schools in the Maidenhead area, as they are unable to continue to supply marquees for events this summer.

One thing that emerged out of children being at home was our COVID-19 School Snake. This was started by our Nursery Teacher, Alex and it grew over the weeks. When children and families went out on their daily walk, they would add another decorated stone to our snake. When we all came into school each day, it was so heart-warming to see the lovely pictures and messages on the stones.

Even though the children missed out on their residential and usual Summer Term canoeing/kayaking/rock climbing/zip wire trips, we are hoping that we will be able to resume these as things get back to normal in the Autumn Term.

Preparing for new children starting the school has presented some challenges but we have risen to the challenge with online parent meetings, virtual tours, welcome videos etc to ensure everyone is as prepared as possible. We are really looking forward to welcoming new families to Woodlands Park in September in our wonderful nursery as well as our Reception Class. There are also new families due to join us in other year groups and we hope that this will be the start of a wonderful relationship between their families and ours.

We always welcome visitors to our school and, once things are back to normal, if you would like to come and see us please telephone the office on 01628 822350 or email the school office: office@woodlandsparkschool.org

Alison Penny *Headteacher, Woodlands Park Primary School*

Aspects of church life that continue in lockdown....



Tales from the Bells

 *White Waltham Bell Ringing*



During this difficult time, some of you may have noticed that the church clock is still striking the hour. We felt that it would maintain some normality, and to prevent it seizing up, to keep it going. It also gave an indication for the 8 o'clock Clap for the NHS and Care Workers.


The clock is currently being kept wound by Simon – usually it is done by a rota of a fantastic team. Strangely, the clock strike has to be wound twice a week while the clock needs to be wound once a week. Although Simon does top it up each time he is there. The clock weights are quite heavy; during the course of the week, as it unwinds, they gradually drop down about 60 foot into the church into a special cabinet. So, when the clock is wound (from the bell tower), our clock winders are winding those heavy weights all the way back up to the top again! In fact, one of our clock winders says that he doesn't know which is the hardest task: climbing the 72 step spiral stone staircase to get up the bell tower, or winding the clock!



It may seem strange to you that I am writing about the clock under the heading 'Tales from the Bells'; 'What has the clock got to do with bell ringing?' I hear you ask. Well, in addition to it being wound in the bell tower, the clock actually strikes on the number five bell!

We hope and pray that we will be back ringing again in the not too distant future.

Lesley Graves *Tower Captain*

PS Please like our Facebook page  @whitewalthambellringing



Cycling Shop **SAM'S BIKE SHOP**



**Moss End Garden Centre,
Warfield, RG42 6EJ**

Many makes of bikes, spares and accessories
Come and visit us for all your cycling needs.

Free parking

Phone 01344 360922

samsbikeshop@outlook.com

Sponsors of the Andrew family on their successful
1,147 mile Project Rainbow Cycle Ride around Britain in 2011

Bring this advert to get 10% off!

The Village IT Service No job too small or too large



Home users and small businesses in the White Waltham,
Shottesbrooke, Woodlands Park, Binfield and neighbouring areas.

At your office or home.

*One-to-One personal tuition, Advice, Set-up and Installation.
PC Health-Check, Tune-Up, Virus & Spyware, Data Recovery, Email &
Office, Broadband, Wired & Wireless Networks, Skype/VOIP & Webcams.*

Microsoft Windows 10, 8 and earlier versions.

Smartphone and iPad/Tablet advice, set-up and integration.



Katie Sarsfield, Tel: 0118 932 0061/07981 600726
Waltham St Lawrence based
katie@kimservices.co.uk

Online Services and Children's Sessions at White Waltham Church

All our services, children's sessions and other content are pre-recorded and can be watched via our website:

www.stmaryswhitewaltham.org.uk

Just scroll down the home page:

For our Services click on 'This Sunday's Service'
(you can also catch up previous services from this page)

For our Children's Sessions click on 'Families and Kids' and
then choose 'Watch our Sunday Children's Sessions'

Some other content is available on our Facebook page

 **White Waltham Church**

We hope you can join us!



Community News for White Waltham & Woodlands Park

Published every 3 weeks or so, and available on
White Waltham Church's Facebook page and website:

 **White Waltham Church**
www.stmaryswhitewaltham.org.uk

*If you have news about something going in our local community
that you would like to be included please email:*

waltham.vicar@btinternet.com