

White Waltham Church's

# Parish Magazine

June - July 2023



Details of our Services are on pages 15 & 30.

Please do join us. 😊

# Flight Experiences and Introductory Lessons

At White Waltham Airfield  
Buy a unique and exciting present for  
a special person - from £98

**Tiger Moth**



**Open cockpit**

**Piper Cub**



**Look at the view!**

**Piper Warrior**



**Learn to fly**

**Chipmunk**



**Wartime Experience**

Beautiful wartime airfield-30 miles from  
central London—CAA qualified Instructors  
Friendly bar and restaurant



West London Aero Club,  
White Waltham Airfield, Maidenhead  
SL6 3NJ 01628823272 [wlac.co.uk](http://wlac.co.uk)

# The Vicar's Letter

The Vicarage, Waltham Road  
(corner of Foliejohn Way)  
Woodlands Park  
Telephone 01628 822000

Dear Friends of the Parish of White Waltham and Woodlands Park,

It's summertime! As I write it is the week after the coronation, we celebrated very jollily at church on the Sunday making orbs, being helped by a youth band and surrounded by royal flower displays... and what a fabulous Sunday afternoon we had in White Waltham too! Now back to earth, there are exams to be taken, gardens to sort, and sunshine (or showers?) to be enjoyed. And lots of meeting up with friends...

As you read this, we will be coming to the end of a series in church about our relationships with each other, about what 'Love' looks like with different people: as humble people who love and welcome all in the name of our loving Father God, as married people, as people within families, and as people within communities.

One important, and often undervalued, relationship is friendship. Maybe if we could do friendship better, we would not fling ourselves into (and out of) sexual relationships so quickly. Maybe if we could do friendship better, we would feel less alone when facing hard times. Maybe if we could do friendship better, we would be a greater blessing to others and see more of God's work in our lives.

*(continued over)*

## **THIS MAGAZINE**

Published bi-monthly, six times a year.

Delivered free to all homes in White Waltham & Woodlands Park  
and given to all families at White Waltham School.

Freely available at church services.

Also available on White Waltham Church's Facebook page and website:

**Articles for the next edition should be sent to  
[waltham.vicar@btinternet.com](mailto:waltham.vicar@btinternet.com)**

**by 12<sup>th</sup> July 2023**

**Magazines are usually available on the last Sunday of the month**

[www.stmaryswhitewaltham.org.uk](http://www.stmaryswhitewaltham.org.uk)



White Waltham

A vicar in Oxford wrote a book called 'True Friendship'. It is well worth a read and short enough to scan through quickly. He brings out what God says about friendship in the bible under a number of titles (all beginning with c!):

**Friendship is crucial** – indeed the good news of the bible could be seen as God acting to reconcile our friendship with him.

Good **friendship is close** – and is described in Proverbs as being closer than a brother; and Jesus describes those who trust and follow him as being his family over and above earthly family ties.

**Friendship is constant** – a friend can be trusted to stick by you and the one who abandons you is not a friend.

**Friendship is candid and careful** – allowing others in to speak into our lives, and then careful as we do the same. Making ourselves vulnerable and honouring the vulnerability of our friend.

And the **best friendships are Christ-centred** – not only holding values and a goal in common, but also united on a deeper level, able to truly challenge and encourage each other 'as iron sharpens iron'.

Of course, Jesus was the most fulfilled human ever to walk the planet, and was single, surrounding himself with friends.

Our prayer as a church is to be able to show that true friendship to each other. Not necessarily letting everyone know our deepest secrets, but able to share our lives with some, to know and be known, on a level which transforms us and enables us to do more of God's good works.

I pray you might visit with us one Sunday morning, receive a loving welcome, and, in time, become a friend to us too. And more than that, receive Jesus' friendship in your life, the ultimate friendship to sustain you forever.

*Dave*

Revd Dave Atallah

Tel: 01628 822000     [waltham.vicar@btinternet.com](mailto:waltham.vicar@btinternet.com)

## **A BIG THANK YOU**

to everyone who helps to distribute these magazines to every household, and many of the businesses, in the Parish.

Your help and hard work are very much appreciated!

# WHITE WALTHAM GARAGE LTD

WHITE WALTHAM. MAIDENHEAD. BERKS. SL6 3SG  
TEL: 01628 823234

## REPAIRS & SERVICING

(All Makes and Models, inc. 4 x 4s)

## Special Offers on Services

**AIRCON RE-GAS from £60.00 + VAT**

## M.O.T. TESTING STATION

DIAGNOSTIC TESTING

FULL RANGE OF TYRES SUPPLIED & FITTED

**LARGE SELECTION OF QUALITY USED CARS**

PART EXCHANGES WELCOME

### OPENING HOURS

Monday to Friday 08.00 - 17.00  
Saturday Car Sales 09.00 - 17.00  
Sunday Car Sales 11.00 - 16.00

## YOUR LOCAL INDEPENDENT GARAGE

Website: [www.whitewalthamgarage.co.uk](http://www.whitewalthamgarage.co.uk)

## Caroline's Electrical Services



Specializing in the smaller electrical work  
in your home and garden

Contact me today on: 07870 359230 or  
[carolineelectricalservices@gmail.com](mailto:carolineelectricalservices@gmail.com)

- Reliable service
- Friendly and efficient
- Very competitive rates
- Fully insured
- Part P Certified
- Work carried out to 7671 18<sup>th</sup> Edition regulations

Your "LOCAL" Domestic Installer



General building, Extensions  
Kitchens & Bathrooms, Roofing  
Carpentry, Plumbing, Plastering

## No job too small

Professional & reliable - Reasonable rates - Free estimates  
- Fully insured - References and photos available

**Robert Cox**

[bocedevelopments@gmail.com](mailto:bocedevelopments@gmail.com)

Home: **0118 934 3613**

Mob: **07850 057249**

## DAVID SHAILES PLUMBERS & DECORATORS

Showers, Baths,  
Sinks, Repairs,  
Cylinders, Immersions,  
Taps, Washers, Pumps,  
Bathroom Suites, Toilets,  
Basins & Radiators fitted.  
Full Interior & Exterior  
Decorating.  
Reliable & Clean.  
Find us on Facebook.

[i.plumber@btinternet.com](mailto:i.plumber@btinternet.com)

Phone: **0770 8602442**

# WILLS, POWERS OF ATTORNEY, PROBATE & EXECUTOR SUPPORT

*I visit you in your own home*

Contact **Anthony Coyle** for advice  
on all your Estate Planning needs

07496 335909

or e-mail; [anthony.coyle@aps-associate.co.uk](mailto:anthony.coyle@aps-associate.co.uk)

[www.wills-maidenhead.co.uk](http://www.wills-maidenhead.co.uk)



APS Legal and Associates is a member of the Institute of Professional Willwriters and complies with the TSI approved IPW code of practice



**OFTEC Registration C9632**

**Local Business**

**Fully insured to £2M**



- Worcester Bosch Accredited installer
- Oil boiler replacements
- Oil/Gas Safety certificates
- Swimming pool heating
- Servicing & Maintenance



**Tel:- 07816 835520 or E-Mail: [sales@robertsonheating.co.uk](mailto:sales@robertsonheating.co.uk)**

**Website: [Robertsonheating.co.uk](http://Robertsonheating.co.uk)**



## Want to advertise in this publication?

*Contact Bob Crittenden*

Tel. 01628 822000

Email [waltham.vicar@btinternet.com](mailto:waltham.vicar@btinternet.com)

# Woodlands Park Primary and Nursery School



*A place for everyone.  
Together, we are inspired to grow, learn and achieve.*

The summer term has started and we are in the full throws of assessment season! Our Year 6s are sitting their SATs this week and then it will be the turn of our Year 2s, later this month. Whilst assessments are a really important part of school and allow us to find out how children are progressing, the highlight of the term so far has to be celebrating the King's Coronation. On the Friday before the bank holiday weekend, we held a red, white and blue non-uniform day, a rather wet picnic and our own Coronation bake-off. We love a bit of baking here at Woodlands Park! It was a great day and it was lovely seeing the children and staff celebrating a very historic event!



At the start of this term, our School Council were learning about monarchy and politics when they visited the Houses of Parliament. The visit was part of the Parliament Education Centres programme, to help children learn more about politics and how our country is run. The children, from Years 2 – 6 who sit on the school council, toured the chambers and participated in a workshop on how bills are created and passed. As part of the tour, the children were allowed into the House of Lords, where they learned about the work of the peers and the occasion in the year when the King visits to open parliament. The children visited Westminster Hall, where Queen Elizabeth II lay in state and great leaders like Nelson Mandela have addressed our nation. On the day we visited, it was Prime Minister's Questions and the rooms were very busy with MPs, who were due to be part of the discussions in the House of Commons. It was a fantastic trip!

Children have been busy in lessons, polishing up on their maths skills. Maths is an integral part of the primary curriculum and a skill that children will work on every day. Three of our most talented Year 4 mathematicians were selected to take part in a local Rotary Competition held in Cookham. The children competed against other local schools and the competition was tough. Whilst they didn't win, they came back with their heads held high.

*(continued)*

Recently, we have had a volunteer group visit us called Goodgym. Goodgym is a group of local people who walk, run and cycle to venues to undertake good deeds. Seventeen volunteers turned up and they quickly got to work in making our tatty swimming pool fence look really smart. Thank you for your help, Goodgym!



All families applying for Reception places for September 2023 have now received their allocations. We still have places if you, or a family you know, are unhappy with their current allocation for September. Please come and visit us - we are a school that is on the up and we encourage you to come and see what we are all about. Did you know that we have a forest school, chickens and an old London bus as our school library? Why not come and see for yourself! Please contact the school office on 01628 822350 to enquire or arrange a visit.



*Jamie Miles, Headteacher*

[www.woodlandsparkschool.co.uk](http://www.woodlandsparkschool.co.uk)    [office@woodlandsparkschool.org](mailto:office@woodlandsparkschool.org)

01628 822350

Loft ladders supplied and  
installed from only  
**£175 plus vat**

Call now for a free quotation!

**01753 840 485**

[www.theloftaccesscompany.com](http://www.theloftaccesscompany.com)



The  
**Loft Access Company**  
For everything loft related





# FOREST GREEN MOTORS & TRAILERS

## CAR SERVICING, REPAIRS & DIAGNOSTICS

To most makes and models from small services to brake overhauls  
MOTS arranged, fitting of batteries, bulbs and wiper blades

**APPROVED MEMBER OF RMI & TRUST MY GARAGE**

## TRAILER SERVICING & REPAIRS

Parts and trailer accessories  
We also supply and fit towbars and towing electrics

**UNIT 4, MANOR FARM, MANOR FARM ROAD,  
SHURLOCK ROW, READING, BERKSHIRE. RG10 0PY  
TEL: 01189 34 33 79 or 07778 21 77 41**

## General plumbing repairs and installations

*From a leaky tap  
to a full bathroom installation*

**Over 28 years' experience**



## Why not call us for a free quote

Call 07922 875685  
berkshireplumbingrepairs@gmail.com  
www.berkshireplumbingrepairs.uk



## ARNOLD FUNERAL SERVICE

21-23 Little Marlow Road

Marlow

Tel: 01628 898866

Traditional, Alternative & Green Funerals  
Pre-Payment Plans Stonemasonry Floristry

[www.arnold-funerals.co.uk](http://www.arnold-funerals.co.uk)

*6 Generations of Service in the  
Community*



# WWVA

White Waltham Village Association

## Events



We will be holding our Annual

*Picnic in The Park*

*on Saturday July 15th from 5pm*

*in Grove Park*

**The event is a great opportunity to have a family friendly picnic together with all your neighbours and friends in the heart of the village - Grove Park.**

**Food, drink, friends, music and a child friendly location !**

**Check on our Facebook or Web Page for more details closer to the time ( QR codes below )**

---

WWVA Facebook Page



WWVA Website



# St Mary's Flower Guild, White Waltham

Thank you to all those who helped decorate the church for the Coronation weekend. All the arrangements and displays (*see photos below*) were greatly admired and appreciated.



## Here are some dates for your diary:

**Tuesday 30th May** – a visit to Waltham Place Garden – a tour of the garden to include tea and cake – cost £18 - there are still places available so please contact Carolyn.

**Sunday 25th June** – a Garden Party in Carolyn's garden 2.30pm to 4.30pm with tea and cake, a raffle and a plant and book table. Donations of raffle prizes, plants and books would be welcome.

**Saturday 1st July** – How to do a pedestal arrangement – a demonstration by Chris Smith. In the Tree House at 10am.

There will be further activities later in the year to include demonstrations, workshops and fund-raising coffee mornings. An Autumn Garden Visit has also been arranged in November (details in due course)

We always welcome new members to our friendly group. You don't have to be an experienced flower arranger to join us.

For information on any of our activities please contact Carolyn Thompson 07834 545967, Liz Atlay 07881 785131 or Julia Hodgson 07904 999685.

**We look forward to seeing you.**



# STEANE & CO

Est 1884

## Hardware & DIY Store



ironmongers

paint & gardening

water softening salt

key cutting

tools & plumbing

electrical

household items

LED light bulbs

### FREE LOCAL DELIVERY

(terms and conditions apply)

124 Wessex Way, Cox Green, SL6 3DL

[gyn3@msn.com](mailto:gyn3@msn.com)

01628 624480

[www.steaneandco.co.uk](http://www.steaneandco.co.uk)

### ACTIVE AGING WITH JANE

- Would you like to feel more confident moving around your home and going out?
- Do you have any aches or pains that you would like to get rid of?
- Have you had breast cancer surgery and are looking to get back the movement you had before the treatment?

I specialise in working with clients to resolve these issues; Cox Green based

**Jane Basley**

01628 302144/07507 718781

[jane@bodymanoeuvres.com](mailto:jane@bodymanoeuvres.com)

[www.bodymanoeuvres.com](http://www.bodymanoeuvres.com)



Contact me for a no obligation consultation

# TREES!

How good are you at pruning trees and bushes in your garden? I've always found that having a good eye for shape as well as knowing how to prune is useful. The power equipment available today has made the job much easier, though care has to be taken not to let the power tool slice off the wrong branch or twigs!

In the churchyard we have a number of beautiful trees, especially the marvellous yew tree behind the church, which has been officially dated at over 1600 years old! Have a look next time you come to the church or churchyard. It is old and gnarled but still very prolific and a wonderful tree to photograph. It attracts visitors and is written about in local trail-walking books. It undoubtedly pre-dates our 12th century church.

The twin trunks of the ash tree in the middle of the churchyard, however, seem to have been suffering from die-back for some time now. The tree hasn't deteriorated badly, except that there has been a constant flurry of small branches and twigs that fall, particularly in the high winds that we get. We took professional advice and decided that we would cut out all the dead wood and monitor it to see if that helped it flourish.

Now, I can climb a ladder to paint the house, but I'm not into rope climbing up massive trees! The tree surgeon team showed no fear and soon amassed an enormous pile of dead wood as they very carefully lowered down the branches which they then ground down. In fact, when you look at the ash tree now, it looks very healthy indeed.

I have mentioned previously that we have The Tree House (close to the ash tree) and our Little Roots toddler group that meet on Monday mornings. So, trees are not only well represented in our churchyard with ash, yew, oak and others, but the names The Tree House and Little Roots have been specifically selected to show how as people and as Christians, we grow in life and in our Christian lives.

In John chapter 15 verses 1-8 Jesus says of himself, *"I am the true vine and my Father is the gardener."* We all need that close relationship with Jesus. He goes on, *"He cuts off every branch in me that bears no fruit."* This is where the tree surgeons had to remove all the small and big dead wood. Maybe our lives do not reflect any relationship with Jesus at all. Jesus continues, *"While every branch that does bear fruit, he prunes so that it will be even more fruitful."* This is the only way to be healthy in the Christian life. We all need to grow as Christians and we need to have some pruning done in our lives, but that might be hard for us to accept.

So, now you know a bit more about our trees, come to church on Sunday! While you are joining us, take a look at our stunning trees as you drink a cup of coffee !

*Bob Crittenden*

# Little Roots Baby & Toddler Group

*For babies and toddlers with their parents/carers*

We meet between 9.00 & 11.15am on Mondays during school term time. Come when you can, go when you must – we have a range of toys out for free play, Bible story time and music. We provide appropriate snacks for little ones.

We meet in The Tree House, which is located in the churchyard at White Waltham Church. Some parking is possible at the bottom of Church Hill, and more spaces are available in the yard of Bury Court Antiques (Alistair Price).

*We would love to see you!*

 Little Roots Toddler Group  
[www.stmaryswhitewaltham.org.uk](http://www.stmaryswhitewaltham.org.uk)



## **Want some financial help with your education?**

**Have you left school?  
Are you thinking of full-time training or education?  
(apprenticeship/College, university etc.)  
or are you already there?**

If you are under 25 and live in the civil parishes of Shottesbrooke or White Waltham, or the south ward of Hurley ... then the Duell and Hawes Educational Trust may be able to help you with a grant (*this includes areas within Knowl Hill, Warren Row, Littlewick Green, Woodlands Park and Paley Street*).

For further information on the areas covered and eligibility, please write to: Clerk to the Trustees, Carolyn Thompson, Spire View, Waltham Road, White Waltham, SL6 3SG or email: [carolynt52@icloud.com](mailto:carolynt52@icloud.com) for an application form

# Little Red Hen Nursery

- Open from 7.30am – 6pm
- Childcare from 3 months – 5 years
- Flexible hours for children to attend
- Open 51 weeks of the year
- All day from £64 per day, or morning or afternoon sessions from £30. Prices vary on age of child.
- Prices are all inclusive of nappies, wipes, fresh meals, snacks and sun cream for all children.



[enquiries@littleredhennursery.co.uk](mailto:enquiries@littleredhennursery.co.uk)

01628 290 404 / 07549 333 669



Our home from home nursery accommodates the individual needs of children aged between 3 months and 5 years. We offer a total of three bright, airy, age-appropriate rooms, consisting of our Baby, Toddlers, and Pre-School room. We also have a large bespoke outdoor play area, designed to capture the children's vivid imaginations, and offer ample *learning opportunities*.

Come and see for yourselves!

**Unit 3 – 5, Grove Business Park, Waltham Road,  
White Waltham, Maidenhead, SL6 3LW**



## Playing Updates (sort of...!)

Well, I did hope to provide some form of cricketing update, but as I'm sure everyone is well aware, the weather hasn't been very kind to us so far this spring.

Of a possible 8 pre-season games, we managed 2 and with the highly anticipated start of the league season commencing on Saturday 6<sup>th</sup> May, it was of course a complete washout. We try again on the 13<sup>th</sup> May with the 1<sup>st</sup> team taking on local rivals Taplow CC and the 2<sup>nd</sup> team heading to Bagshot CC.

We did manage some cricket on Sunday 7<sup>th</sup> May, losing out to Wraysbury CC in the first regional round of the National Village Knockout. It's a competition we had great success in last year (narrowly missing out on a place in the National knockouts), but unfortunately this year, we exited at the first hurdle.

Our Juniors also hope to get some much-needed game time in soon too!

## Other News

The club have just pledged money towards a much-needed refurbishment of the existing net facilities. The dated practice nets (now over 25 years old) are in need of an upgrade and the club has put down significant funds, which will benefit all club members moving forward.

We would be hugely grateful if anyone can spare any money towards this net funding, a link to our Crowdfunder can be found here: <https://www.crowdfunder.co.uk/p/wwcc-cricket-nets-fund>

Many thanks,

*Jonny Mahoney*

**WWCC Chair**

*For more information, or if you are interested to join/train with the club, then please visit our website or contact us using one of the below options:*

Website: [www.whitewaltham.play-cricket.com](http://www.whitewaltham.play-cricket.com)  
Facebook: @WhiteWalthamCC  
Twitter: @WWCC\_1879  
Instagram: whitewalthamcricketclub



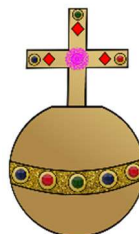


# All Age Service for Coronation Weekend

We had a great time at the All Age Coronation Weekend service at White Waltham. The church looked great, decorated with bunting and flower crowns.

After a warm welcome, we sang songs led by the youth band; we had interesting short talks about recognising kings and even audience challenges which meant chocolate prizes!

At the end, there was fun crafting to make an Orb like King Charles' one, with a helpful Bible verse to remember: that Jesus is a king who came not to be served but to serve and to give his life as a ransom for many.



*Neil, Nina, Henry, Rory and Arthur*

*Do join us for our next*

## All Age Service

**Sunday 23<sup>rd</sup> July at 10.30am**

Come along ready to take part if you wish, through interactive craft, drama and story.



*Everyone is welcome to join us*

*We carefully plan our All Age Services to provide opportunities for active involvement and participation in a range of ways; there is something for everyone!*



# Read this short story from the Bible...

## Bible Bite

A short story from the Bible

It can be read in the Bible in  
Genesis ch 25:19-33, 27:1-42

Jacob had cheated his father and brother, and had run away to stay with his uncle Laban. On the way there..

Jacob saw angels and heard God.

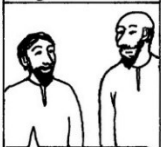


At Laban's house, Jacob met his cousin Rachel



Work for me for 7 years and you can marry her

7 years later

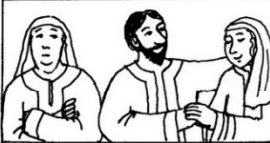


Can I marry Rachel now?

But Laban tricked him into marrying her sister Leah

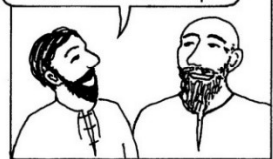


So Jacob worked 7 more years to marry Rachel



Then he said to Laban

As you aren't paying me wages, can I have the black sheep?



Laban agreed, but that day he moved all the black sheep far away



But God blessed Jacob and his black-flock grew



Laban became very jealous of Isaac



Your father doesn't like me any more. We need to go back to my home.



They waited until Laban was away..



but he was told ...

Jacob!



...and complete this Wordsearch about it!

a	w	a	y	r	u	n	d	n	e	p
m	h	t	r	a	j	e	s	c	e	o
b	r	o	t	h	e	r	l	e	a	h
l	m	l	m	r	a	c	h	e	l	w
a	a	n	g	e	l	s	o	h	r	a
c	r	a	y	g	o	d	n	e	s	g
k	r	w	r	y	u	i	h	i	e	e
j	y	o	s	i	s	t	e	r	v	s
a	s	r	r	u	a	m	o	v	e	d
c	b	k	o	f	l	o	c	k	n	l
j	a	c	o	b	l	a	b	a	n	e

sheep

Leah

years

run

flock

agreed

God

work

sister

Rachel

black

father

angels

jealous

away

marry

Jacob

wages

seven

brother

home

Laban

cousin

moved



*Cycling Shop*

# **SAM'S BIKE SHOP**



**Moss End Garden Centre,  
Warfield, RG42 6EJ**

Many makes of bikes, spares and accessories  
Come and visit us for all your cycling needs.

Free parking

**Phone 01344 360922**

**samsbikeshop@outlook.com**

Sponsors of the Andrew family on their successful  
1,147 mile Project Rainbow Cycle Ride around Britain in 2011

**Bring this advert to get 10% off!**



# Live well *your way*

Your home is where you feel the most comfortable and the happiest. It is the place you know the best. If you want to stay living well at home, **Home Instead can help make that possible.**

- Home Help
- Personal Care
- Companionship
- Dementia Care

**01628 299 097**

melissa.johnson@homeinstead.co.uk  
www.homeinstead.co.uk/maidenhead

*Award winning support since 2012, from hourly care to live-in*



Want to join our care team?

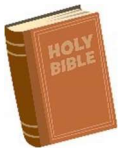
**Call us to find out more!**

# A new King Crowned

Yes, here in New Zealand, we stayed up late into the night to watch the Coronation of King Charles III in Westminster Abbey. We were blessed to be able see what you probably saw; the BBC coverage.

It is true that Charles is our Head of State just as he is for you in UK. You may have heard that throughout the Commonwealth and even in the United Kingdom, there is some opposition to the monarchy, but it is my prayer that this institution will long continue, as it had served UK and the Commonwealth very well down the centuries.

So, we watched as the Archbishop of Canterbury placed the crown on the King's head – all symbolic as by now the crown is back in the Tower of London where, I assume, lots of you have seen it.



But as ever, events like this get me thinking. The Bible (and here I must remind us all that during the coronation, the Archbishop presented His Majesty with a very special Bible saying that “this book, the most valuable thing that this world affords. Here is wisdom; this is the royal law; these are the lively oracles of God.”) yes, the Bible talks of other crowns too.

But the Bible tells us of a very different crown. Matthew chapter 27, verse 29. ‘And when they had plaited a crown of thorns, they put it upon his head, and a reed in his right hand: and they bowed the knee before him, and mocked him, saying, Hail, King of the Jews!’ Now there is a real contrast!



King Charles in all his finery, in that wonderful Abbey and then Jesus, bruised and bleeding, is mocked with a crown of thorns pressed into his scalp. Yes, the soldiers did this to mock him and soon afterwards they led Him to Calvary's mount, where they crucified Him and so He died between two law breakers who deserved to die – as one of them said. Thus, Jesus died and was buried, and it is possible to visit Jerusalem today to see where all these things took place just as many, including me, have stood in Westminster Abbey.

But that was not the end, as we have recently celebrated over Easter. Jesus rose and is now crowned with glory and honour in heaven. But wait, what's this? The apostle Paul wrote in 2 Timothy chapter 4, verse 8, ‘Henceforth there is laid up for me a crown of righteousness, which the Lord, the righteous judge, shall give me at that day: and not to me only, but unto all them also that love his appearing.’

It is true. There is a crown for you and me if we are amongst those who are expectantly waiting for Christ's return. Please, O please, be sure that you are!

*Eric*

*eric.green@xtra.co.nz*



**WE'RE HIRING**  
Want to join our team?



Inspected and rated

Outstanding ☆



## Award-winning support, Right at Home. White Waltham and Woodlands Pk.

Right at Home – the most highly recommended homecare company in the area.



5\*Star Employer Award 2019 Nationwide

Top 20 Most Recommended Homecare provider SE England 2020

Rated "Outstanding" by the Care Quality Commission (CQC)

Rated 10/10 by clients and families on homecare.co.uk

Best Company to Work For Maidenhead and Windsor Business Awards

**WE'RE HIRING – Call Now to be part of our 2021 Success!**

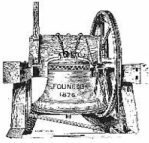
☎ 016128 200068 [www.rightathomeuk.com/maidenhead](http://www.rightathomeuk.com/maidenhead)



**Right at Home**


Bridgeview House, Ray Mead Rd, Maidenhead, SL6 8NJ





# Tales from the Bells



 *White Waltham Bell Ringing*

Since the last magazine, so much has happened. We've had people join us: a new learner (see the piece at the bottom of this page) and a returning ringer.

The teaching for the new learner has been very intense, in order to have them ringing their own bell in time for the King Charles III Coronation, a historic event. With the commitment from both teacher and learner, the learner was ready in time to ring.

On the day of the coronation, we were a team of seven (due to one visiting ringer) and were able to ring all six bells at White Waltham. We rang rounds and call changes, which included one combination where the bells ring in the order of 531246, which is called Kings, and another combination 135246 and is called Queens, both very apt for the Coronation. On the following day (Sunday), we managed to ring 5 bells for service.

Having the two new ringers has made a considerable difference. We are able to ring more.

As ever, if you are interested to learn to ring, please do get in touch.

*Lesley Graves*  
*Bell Captain*

*And from our new learner...*

I have always loved the sound of church bells and had occasionally thought about learning to ring, but it was the 'Ring for the King' campaign that finally spurred me into action! With only eight weeks to the coronation, I was cutting it fine, but I really enjoyed learning and Lesley has been a brilliant teacher – extremely patient and generous with her time. I still have plenty to learn, but I managed to ring on the day and in the process, have found something that I love doing!

*To express an interest in learning please contact us  
on 01628 822000 or email [white.waltham@sdb.odg.org.uk](mailto:white.waltham@sdb.odg.org.uk)*

# White Waltham Church's Annual Meeting 2023

As a church, we have much to praise our Father God for – and much to ask Him for as we plan to continue to grow and be able to share His love more effectively with others. So it was great to have our annual meeting as part of our Sunday morning service on 23<sup>rd</sup> April, to acknowledge that this is Jesus' church and offer our worship and thanksgiving.

Before the meeting, an Annual Report was circulated covering the previous year's church family activities, both in the church and wider local communities. Then, during the service, there were several short videos of our church members, describing how they serve the church. This reminded us that as members of our church, we are each very different and bring our God-given talents to serve Him in a great variety of ways.

At the meeting we welcomed our newly elected Churchwarden, John Croft, who will be working alongside Liz Atlay; also, our new treasurer Chris Hodgson (with thanks to Andy Eden who is stepping down from this role) and two further new PCC members. Following an explanation of church finances, the congregation was also given a time for any questions. It proved to be a very interesting and informative meeting, which sat well within our Sunday worship.

After the APCM, we all joined together in The Tree House for a bring-and-share lunch. This was a lovely time for fellowship, along with a delicious array of terrific food. It was a fantastic opportunity to chat in a relaxed environment with more time than usual. Everyone just brought along what they wanted to share, and this worked very well, with a large selection of different hot and cold dishes and delicious desserts.

Thanks go to the Pathfinders (our teens group) and their leaders for setting up the room, and to Bridget and Sally for running the kitchen and clearing up. A particularly big thank you to Brian and Joanie from St Mary's Church in Maidenhead, who ran our children's groups so everyone could attend the meeting.

*Julia Hodgson*





# Left behind

I recall many years ago joining a party taking the cross-channel ferry from Dover to Boulogne. In addition, I remember one member of our party being reduced to a state of panic on realizing as the boat pulled out, that he'd left his bag on the quay.

Here he was, making this long-awaited trip when in his excitement he'd left what he needed behind. How could he possibly manage? All my life I'd carried with me the adage 'You can't take it with you' – a reference to life's end, possessions – worldly things to accompany me in the grave.

In Jesus's own words:

*'Do not store up for yourselves treasures on earth where moths and rust destroy, and where thieves break in and steal, but store up for yourselves treasures in heaven where moths and rust do not destroy and thieves do not break in and steal, for where your treasure is, there your heart will be also'.*

(Matthew 6:19 – 21)



Bob Packer

## Su Doku

Easy

2				6		8	4	1
	4	1			3			
			8				5	
		5	9			6	8	
	7		3	2	4			1
	1	4			6	3		
	3				5			
			1			4	9	
1	9	6		7				2

© 2013 KrazyDad.com

Medium

1	5							
				6	4			
	3	6		2	9	1		
	7			1	2			
8	9						4	1
			3	9			2	
		7	9	4		2	3	
		5	7					
							8	6

© 2013 KrazyDad.com

# D & M KITCHENS



01628 826156

dmkitchens77@aol.com

Family run business – Established 1977

Specialists in the Design, Build & Installation of kitchens & bedrooms

- Supply only or complete installation
- Made to measure replacement door service
- Bosch, Neff & Siemens built in appliances at internet prices

The Kitchen Studio  
Bath Road  
Knowl Hill  
nr Maidenhead  
RG10 9UR

## Opening Times

Mon – Fri 9am – 5pm

Saturday 9am – 3pm

Closed Sundays and Bank holidays



[www.dandmkitchens.co.uk](http://www.dandmkitchens.co.uk)



# Burbidge

# News from your Borough Councillor



**Cllr Maureen Hunt**  
cllr.hunt@rbwm.gov.uk  
0118 940 4808

What a difference a day makes.... The election on 4<sup>th</sup> May saw a change in the administration for the council and a new councillor for Hurley & the Walthams replacing Andrew Johnson. I look forward to working with the new councillor George Blundell. This is the largest Ward area in the Borough with 17 villages. I recall my first few weeks 16 years ago, travelling around the Ward, meeting so many residents and feeling honoured and privileged to be one of your representatives on the council. That feeling doesn't go away and my thanks to all who voted for me, allowing me to continue working for you in this beautiful Ward.

The new political make-up of the council is:

- Liberal Democrats – 22 seats
- Conservative – 7 seats
- The Borough First Independents – 7 seats
- Old Windsor Residents' Association – 2 seats
- West Windsor Residents' Association – 2 seats
- National Flood Prevention Party – 1 seat

On 6<sup>th</sup> May, we had the Coronation of King Charles III. Thousands of people attended special events in Windsor for the local community to celebrate the Coronation of Their Majesties, King Charles III and Queen Camilla.

The Long Walk was the focus of the celebrations, with big screens provided by the Royal Borough of Windsor & Maidenhead for residents to watch the Coronation ceremony live from Westminster Abbey in London and be part of this historic moment on Saturday. On Sunday, crowds gathered with picnics for the Coronation Big Lunch.

Separate to this, around 20,000 thousand people from across the UK attended the BBC Coronation Concert in the grounds of Windsor Castle on Sunday night, including hundreds of lucky residents of the borough, who secured tickets through a special local ballot.

Here in our Ward, the villages and streets had their own celebrations. It is with thanks to all those who organised these wonderful parties, as we all joined in to have such a wonderful time. What a great place we live in.

## **Local Travel Updates**

The Aslef union has announced industrial action, which will affect local Great Western Railway (GWR) and South Western Railway (SWR)

services on **Wednesday 31 May** and **Saturday 3 June**. There will also be further disruption to services from **Thursday 1 June** due to action short of a strike. For more information, please visit the GWR or SWR websites.

For details of council works on highways, visit the RBWM website. For full local roadwork details, including work by utility firms, please visit the One Network website.

Remember, you can report potholes, overhanging vegetation etc. directly to the council on the council's website – [www.rbwm.gov.uk](http://www.rbwm.gov.uk) and enter 'report it form' in the Search box or via:

<https://www.rbwm.gov.uk/home/apply-pay-report/report-it>

## **Cost of Living**

Households in the UK are facing increases in the cost of living, due to a combination of rising inflation, energy bill increases, and National Insurance rises. Increases in prices are being further exacerbated by the war in Ukraine. If you are struggling financially, then please seek help early. **Citizens Advice** provides information and advice if you're struggling with living costs; the Government has also produced some living costs information.

Our borough has a thriving Voluntary and Community Sector, which plays a crucial role in supporting local communities. A wide range of voluntary organisations and community groups provide advice, assistance, and practical support to residents.

The Royal Borough of Windsor & Maidenhead is working with local charities, groups, and partners to help those who need additional advice, assistance, and support. This is not an alternative to social services; this network exists to provide additional support. If you are struggling, please try and take the time to look at the information. However, you can always go to your nearest library where someone would be happy to help you.

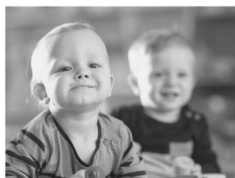
Our libraries are safe spaces for the community. During opening hours, people are welcome to use library facilities, use the public-access computers and speak with a librarian for advice around cost of living support and/or getting online. Another good point of call is our VCS partner Citizens Advice, who can be contacted via freephone on 0808 278 7914. They exist to help solve life's problems by providing free, impartial, confidential and independent advice and information to everyone.

<https://www.rbwm.gov.uk/home/community-and-living/community-support/here-help>

Please do remember, I am here to help if you have any concerns with council issues, so please do contact me.

Kind regards  
*Maureen*

# CHILDCARE PLACES NOW AVAILABLE



FOXLEY DAY  
NURSERY  
SHURLOCK ROW  
8 WEEK-5YRS



WOODLANDS PARK  
PRESCHOOL  
MAIDENHEAD  
2-5 YEARS



MAIDENHEAD  
DAY NURSERY  
BRAYWICK LEISURE  
CENTRE  
8 WEEKS-5YRS



*"There's no other place we  
would have chosen."*

Our commitment is to give every child the best possible start in life and the support they need to spread their wings and grow.

info@wiseowlschildcare.co.uk  
01628 620013  
wiseowlschildcare.co.uk

  
wise owls  
childcare

# Shottesbrooke and White Waltham Charities

Clerk – Carolyn Thompson: 07834 545967, [carolynt52@icloud.com](mailto:carolynt52@icloud.com)

## Shottesbrooke and White Waltham Welfare Fund

This fund was established by the Charities Commission in 1912 to help those living in the 'area of benefit' (the Civil Parishes of Shottesbrooke and White Waltham and the Ward of South Hurley).

### *How we can help:*

The Charity income may be used to help generally, or help individual people living in the 'area of benefit' who are in conditions of need, hardship or distress. It can do this by making grants of money or by providing or paying for items, services or facilities.

### *Restrictions:*

The trustees cannot help pay for rates, taxes or other public funds. However, it may use its funds to add to help that is already being provided out of public funds.

Each application for funding will be considered separately. Applications that are successful on one occasion may not be successful in future.

If you believe you would qualify for funding, please get in contact with the clerk by email ([carolynt52@icloud.com](mailto:carolynt52@icloud.com)) or telephone (07834 545967) and you will be contacted by your local Trustee.

*A letter of support will be required from:*

*a Social Worker, a Vicar/Priest, a Head Teacher, or another official body.*

## St Mary's Church, White Waltham Flower Guild Garden Party & Afternoon Tea

Sunday 25<sup>th</sup> June  
2.30 to 4.30 p.m.

*All welcome*



Teas ~ Cakes ~ Raffle ~ Plants ~ Books

*At Spire View, Waltham Road, White Waltham*

*(Proceeds in aid of Flower Guild Funds to support our work in the Church)*

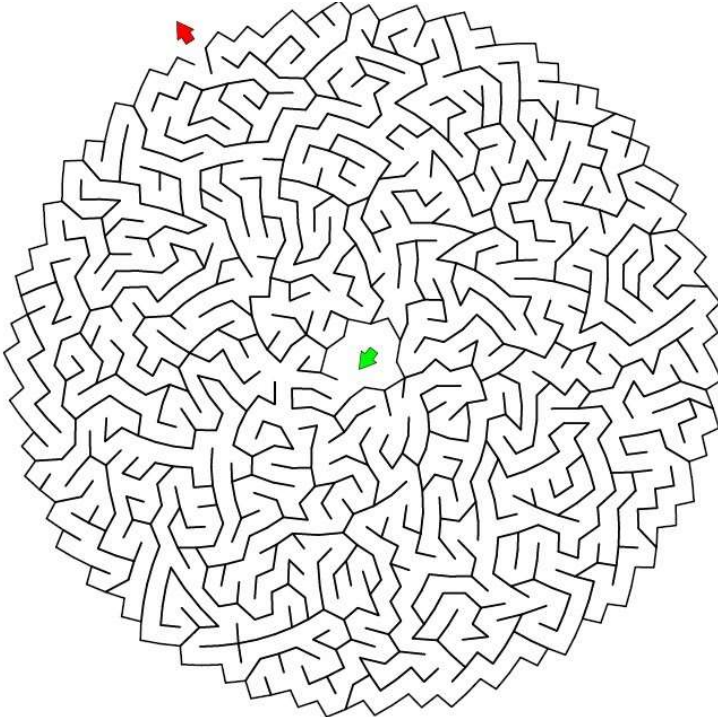
# Thank you...

Many thanks to our congregation at White Waltham Church, to the friends of White Waltham Church, and to the Charitable Trusts who have already made donations towards the estimated £20,000 cost of repairing the ceiling of The Chapel Room (the area at the front southeast corner of the church which is separated from the main body of the church by glass doors).

These very timely donations have enabled work to start on this project – *further contributions would be most welcome to help see it through to completion.* If you would like to help support the upkeep of our magnificent church building, please do get in touch with Bob Crittenden by calling 01628 882000 or contact him via email on [waltham.vicar@btinternet.com](mailto:waltham.vicar@btinternet.com).



## Can you find your way out of the maze?



# Services at White Waltham Church

**Sunday Services at White Waltham Church**  
are at 10.30am *with activities for children every Sunday*

Services are in person and live via Zoom from the church building:  
<http://www.stmaryswhitewaltham.org.uk/zoom>

*N.B. you can join us in one click on our website's main page*

**Special Services**  
coming up this summer

## **All Age Service**

Sunday 23<sup>rd</sup> July  
*at 10.30am*

*Everyone is welcome*

Some content is available on our Facebook page

 **White Waltham Church**

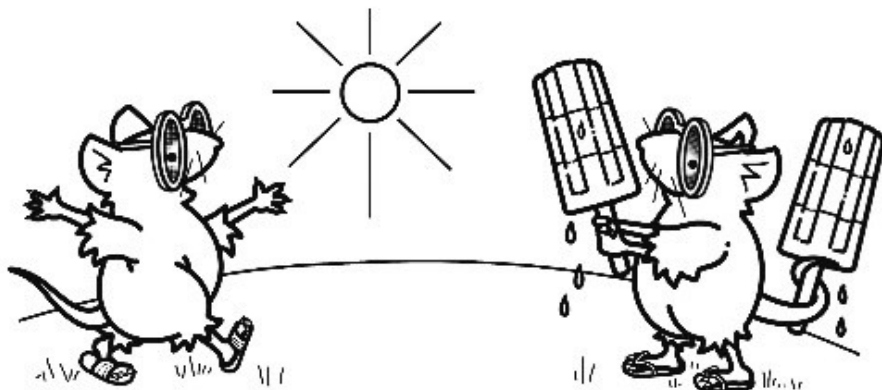
*Do come and join us –  
everyone is welcome at White Waltham Church*





While we do not accept responsibility for products or services advertised in this magazine, we are very grateful to all those that advertise in this magazine and make this publication possible. Please remember if you use any of our advertisers to tell them you saw their advert in this magazine.  
Thank you.

The printed copy of this Magazine is produced by  
**Printique** King Street Maidenhead SL6 1DZ Telephone 01628 630119



## Finding us online...

Follow White Waltham Church on Facebook...

<https://www.facebook.com/whitewalthamchurch>

## And/or visit our website...

You can also catch up with this magazine online.

Visit [www.stmaryswhitewaltham.org.uk](http://www.stmaryswhitewaltham.org.uk)

and you'll find the Parish Magazine under the 'Resources' tab.

You can get the current issues as well as being able to download earlier versions from the past year.

ovenu.co.uk

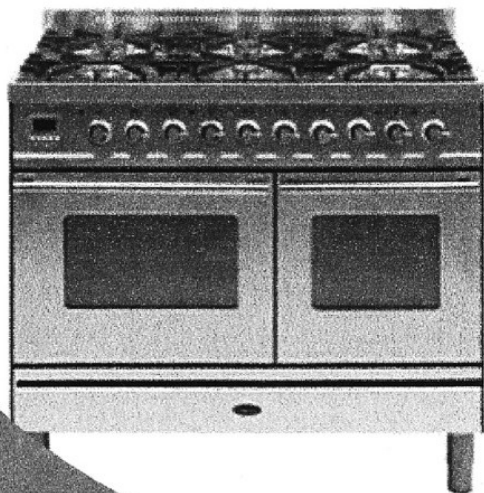
**oven**ü

oven valeting service

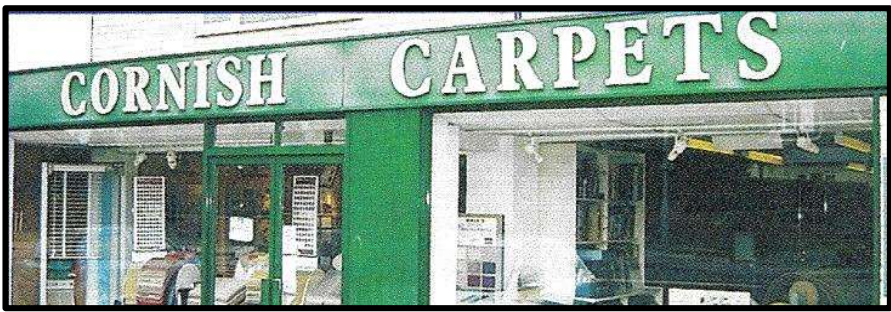
...punctuality, pride, courtesy and quality all  
come as standard...

- Range & AGA Specialist
- Ovens & Hobs
- Extractor Hoods
- Microwave Ovens
- Traditional Stoves

LET US HELP - PHONE NOW  
01628  
439791

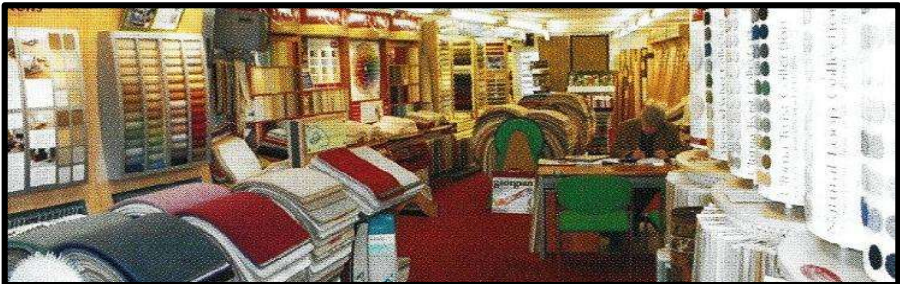


*the UK's favourite oven cleaning specialists*



**Family business since 1962 – 61 years!**

- All stock rolls at greatly reduced prices
  - All major makes supplied
- Roll ends and remnants priced to clear
  - FREE estimating and planning
  - Expert fitting service available



**Cornish Carpets, 9 Waltham Road,  
Woodlands Park, Maidenhead SL6 3NH**

**Tel: 01628 824555**

e-mail: [getintouch@cornishcarpets.co.uk](mailto:getintouch@cornishcarpets.co.uk)

website: [www.cornishcarpets.co.uk](http://www.cornishcarpets.co.uk)

**CORNISH CURTAINS Tel: 01628 824222**

Call for a no-obligation quote or design advice