

# Community News for White Waltham and Woodlands Park

Welcome to this new electronic edition of Community News for our local area of White Waltham and Woodlands Park.

In this edition we are bringing you news from Woodlands Park Primary and Nursery School, and what's going on at White Waltham Church.

In amongst all of that you will find advertising for local businesses - please do support them at this challenging time.

*If you have an article or advert you would like included, please get in touch. Details are on the final page.*

## Woodlands Park Primary and Nursery School



After an Easter break full of chocolate and outdoor meetings with much-missed family and friends, the children returned to school to start the first and final term of this academic year. What a strange year it has been! We are reminded of just how wonderful and resilient our young people are. The way in which they have adapted to ever-changing routines and restrictions has left us in awe. We are very proud of them all.

Staff and children have been as busy as ever finding new and exciting topics and projects to get stuck into.

We have continued to prepare for our new Nurture group 'The Nest' which will run every Wednesday afternoon from September. Staff have been busy setting up the new Nurture space and resourcing it to ensure that our children get as much out of it as possible. After a difficult year for many, it is so important that children and young people are given the emotional support they need. It is our hope that this group will help to facilitate the promotion of success, confidence, self-esteem and the enjoyment of learning.



Our Year 6 children took part in a special day to commemorate Anzac Day on 25<sup>th</sup> April. Anzac Day is a national day of remembrance in Australia and New Zealand that broadly commemorates all Australians and New Zealanders who served

and died in all wars, conflicts, and peacekeeping operations and the contribution and suffering of all those who have served. The children spent the day producing some super creative writing about being in the trenches and learning the song 'Waltzing Matilda' among other exciting activities.

Our Year 3, 4 and 5 children are enjoying special dance sessions this term with the School Sports Partnership (SSP). The office staff have even joined in a few times! The children in Key Stage 1 and Years 3, 4, and 5 will be taking part in the SSP Active Roadshow in late June, which will be a celebration of keeping active in lots of different ways, including an appearance from Dan the Skipping Man!

Our youngest children had a very special surprise visit from an Alien earlier this term! They went into our forest school area to discover a spaceship has crash landed! The children spent time writing letters to the Aliens telling them all about the reasons why Earth is such a great place to live.



Do you have a child ready to start Nursery? We have recently changed our policy for Nursery and are now taking children from 2 years 9 months either with two year old funding or as a paid place. Our Nursery is filled with children who feel nurtured, confident and ready to learn. We offer caring and knowledgeable adults, a wonderful outside classroom and forest school area and much more. We have spaces available at our lovely Nursery and are taking applications for September 2021. Call or email to enquire or ask about an application pack or a tour.



**Remembering Mr Penny:** Former Headteacher of Woodlands Park Primary School, Mr Howard Penny, sadly passed away on Sunday 11<sup>th</sup> April after developing Acute Myeloid Leukaemia for the second time. Many of the wonderful things at Woodlands Park were inspired by Mr Penny's love of sports, nature and the environment. He was a keen 'birder' and wildlife enthusiast who set up our woodland area, which held our original pond. For several years he has worked behind the scenes on the

allotment, polytunnels, swimming pool, forest school area and pond. He also created our Memorial Garden in 2014 to commemorate 100 years since the start of the First World War. Mr Penny also ran the football club for a while too. I know many of you will remember him as your own teacher or Headteacher and it was lovely to read all the wonderful comments on the Woodlands Park Community Facebook Page. He will always be remembered as a gentle and kind man and he will be greatly missed by all.

*Jo Butcher, Laura Hopper*  
*Assistant Headteachers*

## Children are always welcome at White Waltham Church!

Children are invited to join our services with their parents.  
Services are now taking place live from the church building.  
Children's activities have also resumed so please do join us.

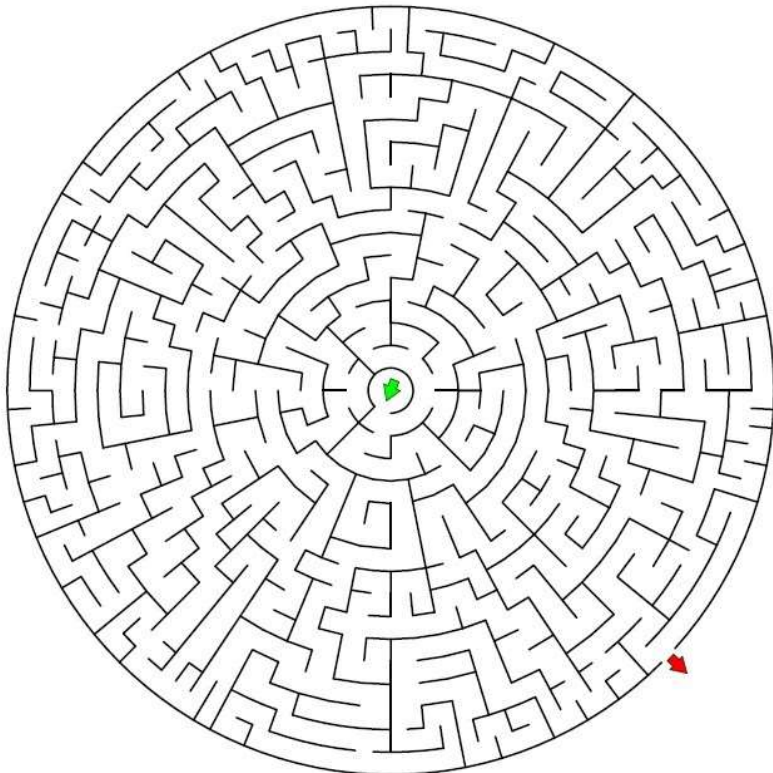
To come to one of our services in person please book via [this link](#).

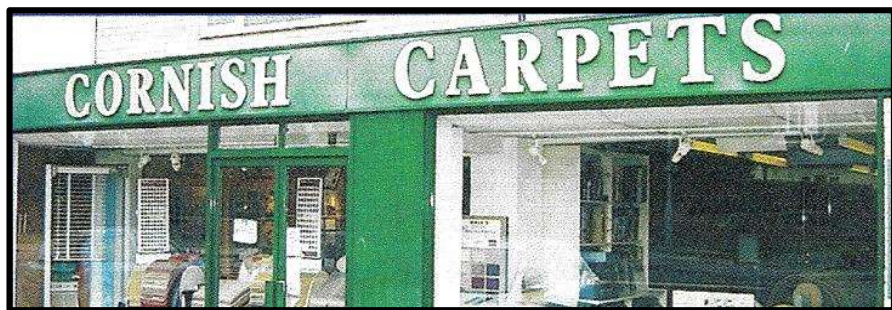
To join us via zoom: <http://www.stmaryswhitewaltham.org.uk/zoom>

*You and your family are very welcome to join us!*

You can catch up on previous Sunday morning children's activities by visiting our website: [www.stmaryswhitewaltham.org.uk](http://www.stmaryswhitewaltham.org.uk)

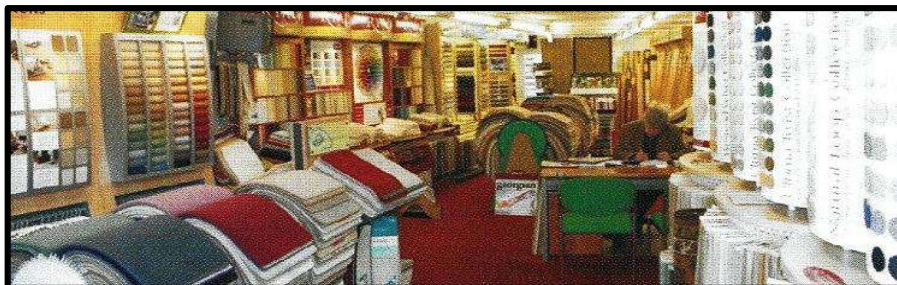
Just scroll down the home page, click on 'Families Area'  
and choose 'Watch our Sunday Children's Sessions'





**Family business since 1962 – 59 years!**

- All stock rolls at greatly reduced prices
  - All major makes supplied
- Roll ends and remnants priced to clear
  - FREE estimating and planning
  - Expert fitting service available



**Cornish Carpets, 9 Waltham Road,  
Woodlands Park, Maidenhead SL6 3NH**

**Tel: 01628 824555**

e-mail: [getintouch@cornishcarpets.co.uk](mailto:getintouch@cornishcarpets.co.uk)

website: [www.cornishcarpets.co.uk](http://www.cornishcarpets.co.uk)

**CORNISH CURTAINS Tel: 01628 824222**

**Call for a no-obligation quote or design advice**

## WHITE WALTHAM GARAGE LTD

WHITE WALTHAM. MAIDENHEAD. BERKS. SL6 3SG  
TEL: 01628 823234

### REPAIRS & SERVICING

(All Makes and Models, inc. 4 x 4s)

### Special Offers on Services

**AIRCON RE-GAS from £60.00 + VAT**

### M.O.T. TESTING STATION

DIAGNOSTIC TESTING

FULL RANGE OF TYRES SUPPLIED & FITTED

LARGE SELECTION OF QUALITY USED CARS

PART EXCHANGES WELCOME

### OPENING HOURS

Monday to Friday 07.30 - 17.00

Saturday Car Sales 09.00 - 17.00

Sunday Car Sales 11.00 - 16.00

### YOUR LOCAL INDEPENDENT GARAGE

Website: [www.whitewalthamgarage.co.uk](http://www.whitewalthamgarage.co.uk)



*GOING ON HOLIDAY? OUT AT WORK?*

**The Answer to Professional Pet Care  
in your own Home.**

Professional, friendly, flexible, reliable &  
tailored pet care services. Registered,  
Insured, Police Checked, Uniformed Staff.

**Dog Walking, Cat/Small Pet Visits  
Home and Pet Sitting  
Pet Home Visits  
Pet to Vet-Pet Taxi  
Pet Friendly Vehicles  
All Animals catered for**

**Call Ron on 01628 627948**  
[maidenhead@petpals.com](mailto:maidenhead@petpals.com)



**General building, Extensions  
Kitchens & Bathrooms, Roofing  
Carpentry, Plumbing, Plastering**

### No job too small

Professional & reliable - Reasonable rates - Free estimates  
- Fully insured - References and photos available

**Robert Cox**

[bocedevelopments@gmail.com](mailto:bocedevelopments@gmail.com)

**Home: 0118 934 3613**

**Mob: 07850 057249**

## DAVID SHAILES PLUMBERS & DECORATORS

**Showers, Baths,  
Sinks, Repairs,  
Cylinders, Immersions,  
Taps, Washers, Pumps,  
Bathroom Suites, Toilets,  
Basins & Radiators fitted.  
Full Interior & Exterior  
Decorating.**

**Reliable & Clean.**

**Find us on Facebook.**

[i.plumber@btinternet.com](mailto:i.plumber@btinternet.com)

**Phone: 0770 8602442**



# Vicar's Letter

Dear Friends of the Parish of White Waltham with Woodlands Park,

I hope and pray you have been enjoying a little more freedom with the lifting of restrictions - a short trip somewhere or seeing friends a bit more easily. That, and the strangely dry and sunny, though cold, April weather has reinvigorated a number of us who were drained from the long, locked-in winter months.

There has been much lost and to mourn from **this last year of lockdown**, as well as surprising gains and joyful experiences. We are pondering how to provide space and time to reflect on this last year, process the sadnesses and fears, and support each other, maybe at a service or event in June or July, if you have any ideas about something that would help you do be in touch.

This season of pandemic has raised questions for all of us, of any faith or none.

God-willing the end is in view, but before we get there, could you make time to check out the Father God who made you and loves you? We will run the **'Identity Course'** on zoom at 8pm on Monday evenings in May and June *see page 11 for more details*. Using video content, across 7 evenings of just over an hour (depending on discussion) we will look together at the Gospel of John to clear up confusion about who we are and who God is. Each session also addresses a popular question such as: Are Christianity and science enemies? What about other religions? Why do we suffer? If any of that sounds interesting but the timing is difficult, please be in touch and suggest an alternative.



Meanwhile, we are back in the building for **our Sunday church services**. It is wonderful to see people gathered (albeit with covid restrictions) again! Those who gather are enjoying the localised heat from under-pew heaters, and those who need to stay away for a while longer are able to join via zoom. The groups for children have been able to start up too. If you have never been, now may be a good time to sample a church service, either booking in to join us onsite, or online from the safety of your own home!

For the next couple of months, we are thinking about what it means for Christians to be 'Strangers in the World', as we are described by the apostle Peter. How to live as Christians in our families and marriages, in our church, workplaces, groups and schools, in society... When it is hard, finding joy and hope, and bringing blessing to others. Come and discover with us how it is strangely wonderful to know and be known by our loving Father God.

(continued over)

May I finish by praying a recent prayer from the Easter season with or for you.

*Merciful Father*

*you gave your Son Jesus Christ to be the good shepherd,  
and in his love for us to lay down his life and rise again:  
keep us always under his protection,  
and give us grace to follow in his steps;  
through Jesus Christ our Lord. Amen.*

*Dave*

Rev Dave Atallah

Tel: 01628 822000 Email: [waltham.vicar@btinternet.com](mailto:waltham.vicar@btinternet.com)

The Vicarage, Waltham Road (corner of Foliejohn Way), Woodlands Park

Date	Theme
April 25	Christians are... strangely distinct
May 2	Christians are... strangely joyful
May 9	Christians are... strangely valuable
May 16	Christians are... strangely loving vs. competitive
May 23	Christians are... strangely united
May 30	<i>God is three persons</i>
June 6	Christians are... strangely good citizens
June 13	Christians are... strangely spiritual spouses
June 20	Christians are... strangely ready to speak life
June 27	Christians are... strangely wise about the times
July 4	<i>God is in charge</i>
July 11	Christians are... strangely persevering
July 18	Christians are... strangely humble
July 25	Christians are... strangely self-controlled

# **FOREST GREEN MOTORS & TRAILERS**

## **CAR SERVICING, REPAIRS & DIAGNOSTICS**

To most makes and models from small services to brake overhauls  
MOTS arranged, fitting of batteries, bulbs and wiper blades

**APPROVED MEMBER OF RMI & TRUST MY GARAGE**

## **TRAILER SERVICING & REPAIRS**

Parts and trailer accessories  
We also supply and fit towbars and towing electrics

**UNIT 4, MANOR FARM, MANOR FARM ROAD,  
SHURLOCK ROW, READING, BERKSHIRE. RG10 0PY  
TEL: 01189 34 33 79 or 07778 21 77 41**

## **Want some financial help with your education?**

**Have you left school?  
Are you thinking of full-time training or education?  
(apprenticeship/College, university etc.)  
or are you already there?**

If you are under 25 and live in the civil parishes of Shottesbrooke or White Waltham, or the south ward of Hurley ... then the Duell and Hawes Educational Trust may be able to help you with a grant.

Write to: Clerk to the Trustees, Carolyn Thompson,  
Spire View, Waltham Road, White Waltham, SL6 3SG  
or email: [carolynt52@icloud.com](mailto:carolynt52@icloud.com)  
for an application form



# *Little Roots Baby & Toddler Group*

*For babies and toddlers with their parents/carers*

## **Resuming Monday 10<sup>th</sup> May**

We meet between 9.00 & 11.15am on Mondays during school term time. Come when you can, go when you must – we have a range of toys out for free play, Bible story time and music, and for the time being please bring a snack - we plan to provide snacks again in due course, once Covid regulations are relaxed further.

We meet in The Tree House, which is located in the churchyard at White Waltham Church. Some parking is possible at the bottom of Church Hill, and more spaces are available in the yard of Bury Court Antiques (Alistair Price).

*We would love to see you!*

 *Little Roots Toddler Group*

[www.stmaryswhitewaltham.org.uk](http://www.stmaryswhitewaltham.org.uk)

## **P.J PLUMBERS**

**24hr Service**

[P.j.plumbers@live.co.uk](mailto:P.j.plumbers@live.co.uk)



**FOR ALL YOUR  
PLUMBING NEEDS**

**01628 822942  
or 07983 145458**

**Want to  
advertise  
here?**

*Contact Bob  
Crittenden*

**Tel. 01628 822000**

or email

[waltham.vicar@btinternet.com](mailto:waltham.vicar@btinternet.com)



*Cycling Shop*

**SAM'S BIKE SHOP**



**Moss End Garden Centre,  
Warfield, RG42 6EJ**

Many makes of bikes, spares and accessories  
Come and visit us for all your cycling needs.

Free parking

**Phone 01344 360922**

**samsbikeshop@outlook.com**

Sponsors of the Andrew family on their successful  
1,147 mile Project Rainbow Cycle Ride around Britain in 2011

**Bring this advert to get 10% off!**

**The Village IT Service**

No job too small or too large



Home users and small businesses in the White Waltham,  
Shottesbrooke, Woodlands Park, Binfield and neighbouring areas.

At your office or home.

*One-to-One personal tuition, Advice, Set-up and Installation.*

*PC Health-Check, Tune-Up, Virus & Spyware, Data Recovery, Email &  
Office, Broadband, Wired & Wireless Networks, Skype/VOIP & Webcams.*

*Microsoft Windows 10, 8 and earlier versions.*

**Smartphone and iPad/Tablet advice, set-up and integration.**



**Katie Sarsfield, Tel: 0118 932 0061/07981 600726**  
**Waltham St Lawrence based**  
**katie@kimservices.co.uk**



# IDENTITY

Who is God? Who are we?

## Monday evenings in May and June on Zoom at 8pm, beginning 10<sup>th</sup> May

Spending just over an hour, depending on discussions, we will look together at the **Gospel of John** to clear up confusion about who we are and who God is.

Each session also addresses a popular question such as:

*Are Christianity and science enemies?*

*What about other religions?*

*Why do we suffer?*

If any of that sounds interesting but the timing is difficult, please be in touch (contact details below) and suggest an alternative.

*A really great, easy course to come to with a friend.*

10 <sup>th</sup> May	The God who created us
17 <sup>th</sup> May	The God who wants to rescue us
24 <sup>th</sup> May	The God we were made for
7 <sup>th</sup> June	The God who wants to comfort us
14 <sup>th</sup> June	The God who loves relationships
21 <sup>st</sup> June	The God who died for us
28 <sup>th</sup> June	The God who wants to persuade us

Rev Dave Atallah

Tel: 01628 822000      Email: [waltham.vicar@btinternet.com](mailto:waltham.vicar@btinternet.com)  
The Vicarage, Waltham Road (corner of Foliejohn Way), Woodlands Park

# Services at White Waltham Church

Services are now taking place live in Church. To join us in the church building please book via the website at [this link](http://www.stmaryswhitewaltham.org.uk).

Services are also available via Zoom for those who need to stay at home: <http://www.stmaryswhitewaltham.org.uk/zoom>

They can also be watched via our website:

[www.stmaryswhitewaltham.org.uk](http://www.stmaryswhitewaltham.org.uk)

Scroll down the home page and click on 'This Sunday's Service' (*you can also catch up on previous services from this page*)

Some other content is available on our Facebook page

 **White Waltham Church**

*We hope you can join us!*



## Community News for White Waltham & Woodlands Park

Published every 3 weeks or so, and available on White Waltham Church's Facebook page and website:

 **White Waltham Church**  
[www.stmaryswhitewaltham.org.uk](http://www.stmaryswhitewaltham.org.uk)

*If you have news about something going in our local community that you would like to be included please email:*

**waltham.vicar@btinternet.com**