

# Community News for White Waltham and Woodlands Park

Welcome to this new electronic edition of Community News for our local area of White Waltham and Woodlands Park.

In this edition we are bringing you news from Woodlands Park Primary and Nursery School, and what's going on at White Waltham Church.

In amongst all of that you will find advertising for local businesses - please do support them at this challenging time.

*If you have an article or advert you would like included, please get in touch. Details are on the final page.*

## Woodlands Park Primary and Nursery School



After a well-earned break, we all returned in late February to Term Four at Woodlands Park. The children have continued to enjoy a range of different activities both in school and at home. The teachers are continually coming up with ways of making learning enjoyable and meaningful. Our youngest children have enjoyed Zoom Dough Disco Sessions with Mrs B and the Nursery and Reception teachers have been setting our children lots of different challenges and competitions in school and at home.

Our Lockdown Recipe book is coming along with some super recipes sent in by our families. We are also creating our 'Gate of Hearts' – the children have been invited to create a heart which can be attached to the gates at the front of the school. The children can knit, sew, build, weave or make their heart in any way they like; as long as they are weatherproof we will be able to add it to our gates. The idea came from St Peter's Church who have asked their community to make a tree of hearts.



The school has been taking part in Maidenhead's Big Read and we have had online workshops with author Tom Palmer and poet Coral Rumble. The children were able to join in sessions listening to the writers talk about how they were inspired to read when they were young and then how they

were inspired to write. There were quizzes and readings and Q&A sessions. The children have also been participating in some exciting science work and some of the children took a virtual school trip to Chester Zoo. We have also been watching the live webcams at Edinburgh Zoo which has been enriching their science work further. We are all enjoying seeing their photographs from home of their science experiments.



As we think about coming out of the current arrangements and welcoming all our children back to school, we have been being growing our Nurture Team to put a focus on Children's Mental Health and Well-Being. We have recently had two more members of staff trained in delivering Nurture sessions here at school. This will help us to ensure our children are given a stable and supportive environment in which to overcome any difficulties they may have. We hope that the group will further build on the work done in the classrooms to promote success, confidence, self-esteem and the enjoyment of learning.

**Woodlands Park Nursery:** We know that during this time many parents and carers have delayed sending their children to nursery but if your child is three (or two if you qualify for funding), please contact the school to find out what we can offer in terms of nursery provision. We have a lovely nursery which is run by the most amazing Early Years professionals who are passionate about enriching and developing little minds. We have super outside facilities with our own woodland area which is used for the children to explore and learn all about the natural world while developing their language, physical skills and self-esteem. There are places for children from three years old and limited places for those two year olds who receive funding.



As always, we warmly welcome enquiries from prospective families who are looking for a warm, nurturing and supportive school for their child and although, at the moment, we are not offering personal tours of the school, we can have a telephone conversation and give you as much information as possible about the school. Please visit our website to see a flavour of the school in action and to view our virtual tour.

[www.woodlandsparkschool.org](http://www.woodlandsparkschool.org)

*Alison Penny, Jo Butcher, Laura Hopper*  
*Headteacher Team*



## Children are always welcome at White Waltham Church!

Children are invited to join our live Zoom services with their parents. From 14<sup>th</sup> March our Zoom services will be taking place live from the church building so families can choose to join us in person.

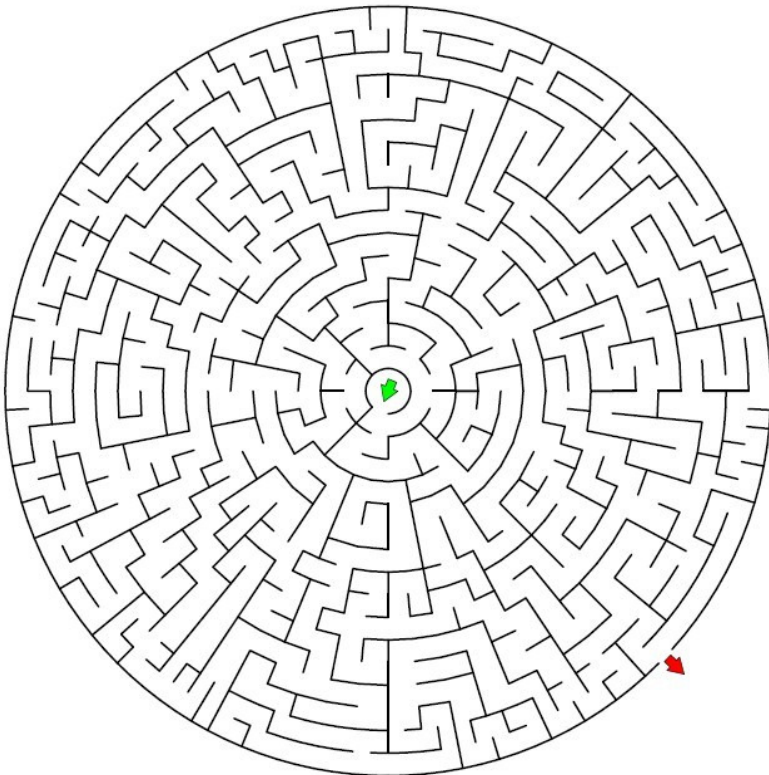
To come to one of our services in person please book via [this link](#).

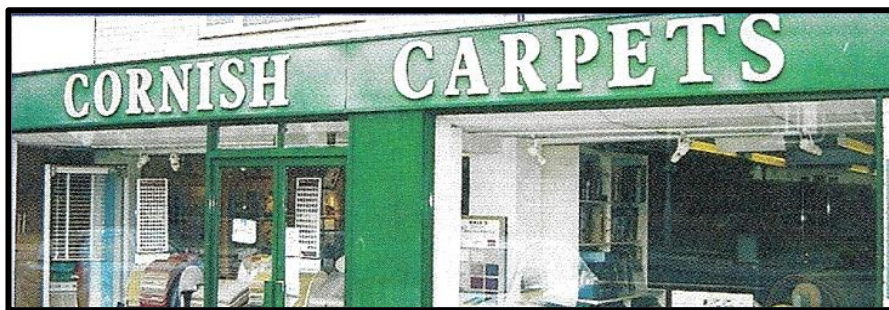
To join us via zoom: <http://www.stmaryswhitewaltham.org.uk/zoom>

*You and your family are very welcome to join us!*

You can catch up on previous Sunday morning children's activities by visiting our website: [www.stmaryswhitewaltham.org.uk](http://www.stmaryswhitewaltham.org.uk)

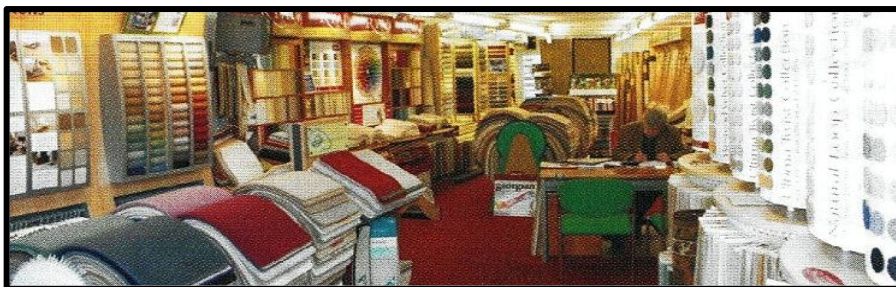
Just scroll down the home page, click on 'Families Area' and choose 'Watch our Sunday Children's Sessions'





**Family business since 1962 – 58 years!**

- All stock rolls at greatly reduced prices
  - All major makes supplied
- Roll ends and remnants priced to clear
  - **FREE** estimating and planning
  - Expert fitting service available



**Cornish Carpets, 9 Waltham Road,  
Woodlands Park, Maidenhead SL6 3NH**

**Tel: 01628 824555**

e-mail: [getintouch@cornishcarpets.co.uk](mailto:getintouch@cornishcarpets.co.uk)

website: [www.cornishcarpets.co.uk](http://www.cornishcarpets.co.uk)

**CORNISH CURTAINS Tel: 01628 824222**

**Call for a no-obligation quote or design advice**

# WHITE WALTHAM GARAGE LTD

WHITE WALTHAM. MAIDENHEAD. BERKS. SL6 3SG  
TEL: 01628 823234

## REPAIRS & SERVICING

(All Makes and Models, inc. 4 x 4s)

## Special Offers on Services

**AIRCON RE-GAS from £60.00 + VAT**

## M.O.T. TESTING STATION

DIAGNOSTIC TESTING

FULL RANGE OF TYRES SUPPLIED & FITTED

LARGE SELECTION OF QUALITY USED CARS

PART EXCHANGES WELCOME

## OPENING HOURS

Monday to Friday 07.30 - 17.00

Saturday Car Sales 09.00 - 17.00

Sunday Car Sales 11.00 - 16.00

## YOUR LOCAL INDEPENDENT GARAGE

Website: [www.whitewalthamgarage.co.uk](http://www.whitewalthamgarage.co.uk)

**petpals**   
*your best friends friend*

*GOING ON HOLIDAY? OUT AT WORK?*

**The Answer to Professional Pet Care  
in your own Home.**

Professional, friendly, flexible, reliable &  
tailored pet care services. Registered,  
Insured, Police Checked, Uniformed Staff.

**Dog Walking, Cat/Small Pet Visits  
Home and Pet Sitting  
Pet Home Visits  
Pet to Vet-Pet Taxi  
Pet Friendly Vehicles  
All Animals catered for**

**Call Ron on 01628 627948**  
[maidenhead@petpals.com](mailto:maidenhead@petpals.com)



**General building, Extensions  
Kitchens & Bathrooms, Roofing  
Carpentry, Plumbing, Plastering**

## No job too small

Professional & reliable - Reasonable rates - Free estimates  
- Fully insured - References and photos available

**Robert Cox**

[bocedevelopments@gmail.com](mailto:bocedevelopments@gmail.com)

**Home: 0118 934 3613**

**Mob: 07850 057249**

## DAVID SHAILES PLUMBERS & DECORATORS

**Showers, Baths,  
Sinks, Repairs,  
Cylinders, Immersions,  
Taps, Washers, Pumps,  
Bathroom Suites, Toilets,  
Basins & Radiators fitted.  
Full Interior & Exterior  
Decorating.**

**Reliable & Clean.**

**Find us on Facebook.**

**[i.plumber@btinternet.com](mailto:i.plumber@btinternet.com)**

**Phone: 0770 8602442**



# What's New?

I wonder what you are thinking of... Roadworks along the streets around the parish ? Neighbours who have just moved in ? A new baby in the family? Or a newly arrived pet?

Well none of those things... it's our church – not a new *building* but some new work *inside* our church building. As we have written before in Community News, we've been planning a new **Warm Welcome**. We trust that we have always made you welcome anyway, but this is different!



We have stripped out the early 20<sup>th</sup> century oil-fired boiler and its visible pipework, and we have removed three pews close to the entrance (*both of these items were sold to reclamation companies and have helped with the fundraising – on the subject of which, thank you very much for all the donations you have given; we are very grateful and to date we expect to cover our costs and do a tidy-up as well*). It's the open space created by the removal of these pews inside the main door area that will be the **Welcome Area** and we have added the '**Warm**' bit with under-pew heaters where each of you will be sitting! The whole project will be ready very soon, well before Easter.



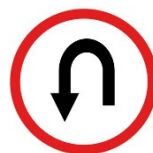
Our church has been trying new ways of worship too! Have you tried out the online services for adults and children? There are not only Sunday services available via Zoom but small group meetings at different times during the week – opportunities to ask questions and join in discussions about the Christian faith. Do try this out by following the details on the church website.

On 25th January each year, the church remembers how Paul the Apostle began a new life – a complete change of direction which startled even a very clever man like him! God stopped him in his tracks on his way to Damascus. He was going there to persecute and maybe even kill Christians because they were preaching that Jesus had risen from the dead. God turned Paul's life around, gave him a new way ahead, trusting in Jesus as his saviour and spending the rest of his days teaching others about Jesus. After all, Jesus is the best example of a new life, rising to live a new life after his resurrection!

So how about you? Why not change direction, find out more about the Christian faith from the church website and think about how you too could experience a new life with Jesus.

We hope to see you when we are open again and give you a "**Warm Welcome**" in our new look church!

*Bob Crittenden*



# **FOREST GREEN MOTORS & TRAILERS**

## **CAR SERVICING, REPAIRS & DIAGNOSTICS**

To most makes and models from small services to brake overhauls  
MOTS arranged, fitting of batteries, bulbs and wiper blades

**APPROVED MEMBER OF RMI & TRUST MY GARAGE**

## **TRAILER SERVICING & REPAIRS**

Parts and trailer accessories  
We also supply and fit towbars and towing electrics

**UNIT 4, MANOR FARM, MANOR FARM ROAD,  
SHURLOCK ROW, READING, BERKSHIRE. RG10 0PY  
TEL: 01189 34 33 79 or 07778 21 77 41**

## **Want some financial help with your education?**

**Have you left school?  
Are you thinking of full-time training or education?  
(apprenticeship/College, university etc.)  
or are you already there?**

**If you are under 25 and live in the civil parishes of Shottesbrooke or White Waltham, or the south ward of Hurley ... then the Duell and Hawes Educational Trust may be able to help you with a grant.**

**Write to: Clerk to the Trustees, Carolyn Thompson,  
Spire View, Waltham Road, White Waltham, SL6 3SG  
or email: [carolynt52@icloud.com](mailto:carolynt52@icloud.com)  
for an application form**

# P.J PLUMBERS

**24hr Service**

**Phillip Gillett**

**P.J.PLUMBERS@live.co.uk**

**Plumbing/Property Maintenance**



## NEED A PLUMBING JOB DONE

- Radiators Replaced
- Pumps Changed
- Zone Valves
- Blocked Drains
- Dripping Taps
- Guttering
- Tiling
- Overflows
- Bathrooms Suites
- Toilet Problems
- Shower Fitting
- Cylinders Replaced

All plumbing work covered and fully insured

No call out charged between 6AM and 6PM

**GIVE ME A CALL FOR A FREE QUOTE**

**01628 822942 or 07983 145458**



# SOS... a cry for help

*“Lord save us, we are going to drown”*

The account that we find in Mark’s gospel where the disciples’ boat was caught in a storm on Lake Galilee, tells of the terror they experienced – and the utter helplessness they felt in a very threatening situation. A tempest was raging, waves were washing over their frail craft causing it to sink. They did what was obvious to them, the only thing they could do... they turned to Jesus, their master, to come to their aid. We are told he was sleeping in the back of the boat. They *expected* him to rescue them. *“Lord save us, we are going to drown”*. Their appeal might be seen as an earnest handwringing prayer of the sort that comes to us in many a dire situation. Jesus’ response was to rebuke the wind and waves, which to the disciples’ astonishment, immediately became still.

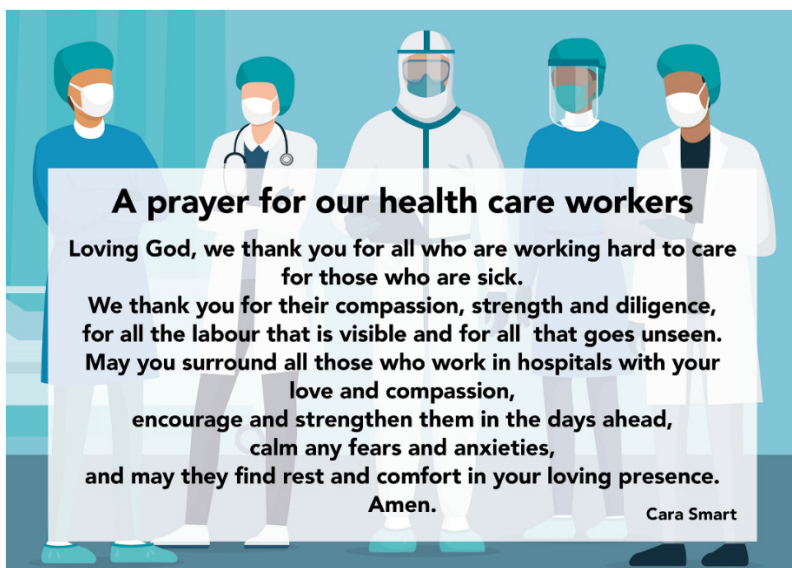
The disciples’ expectations were well founded, they had placed their trust in Jesus and he had not failed them. Taken as a prayer, the appeal had not gone unanswered. Jesus subsequently turned to the disciples and said “Why were you so afraid, do you still have no faith?” We continually remain under the Lord’s protection in every situation and can always turn to him in prayer, the nature of his response sometimes surprising us.

*Bob Packer*

## Prayer for the nation

*This is the Diocese of Oxford’s prayer for health and social care workers.*

*It is being said at 6pm each day – please do join in if you wish.*





# *Cycling Shop* **SAM'S BIKE SHOP**



**Moss End Garden Centre,  
Warfield, RG42 6EJ**

Many makes of bikes, spares and accessories  
Come and visit us for all your cycling needs.

Free parking

**Phone 01344 360922**

**samsbikeshop@outlook.com**

Sponsors of the Andrew family on their successful  
1,147 mile Project Rainbow Cycle Ride around Britain in 2011

**Bring this advert to get 10% off!**

## **The Village IT Service**

No job too small or too large



Home users and small businesses in the White Waltham,  
Shottesbrooke, Woodlands Park, Binfield and neighbouring areas.

At your office or home.

*One-to-One personal tuition, Advice, Set-up and Installation.*

*PC Health-Check, Tune-Up, Virus & Spyware, Data Recovery, Email &  
Office, Broadband, Wired & Wireless Networks, Skype/VOIP & Webcams.*

*Microsoft Windows 10, 8 and earlier versions.*

**Smartphone and iPad/Tablet advice, set-up and integration.**



**Katie Sarsfield, Tel: 0118 932 0061/07981 600726**  
**Waltham St Lawrence based**  
**katie@kimservices.co.uk**

# St Mary's Flower Guild

As the members of St Mary's Flower Guild have been unable to meet, they have been keeping in touch via a newsletter, complete with photos, poems and other pieces of news submitted by each of them

Here are just a few of their early spring contributions.



Icicles in the hedgerow



Hellebores in flower



Shottesbrooke in the snow



A snowy garden



Amaryllis

## Daffodowndilly

She wore her yellow sun bonnet  
She wore her greenish gown  
She turned to the south wind  
And curtsied up and down  
She turned to the sunlight  
And shook her yellow head  
And whispered to her neighbour  
“Winter Is dead”

*AA Milne*



Daffodils in flower

# Online Services at White Waltham Church

Services are currently taking place live via Zoom – do join us!

<http://www.stmaryswhitewaltham.org.uk/zoom>

From 14<sup>th</sup> March, our Zoom services will be live from the church building. If you would like to join us in church from 14<sup>th</sup> March, please book via the website at [this link](#).

Services can also be watched via our website:

[www.stmaryswhitewaltham.org.uk](http://www.stmaryswhitewaltham.org.uk)

Scroll down the home page and click on ‘This Sunday’s Service’  
*(you can also catch up on previous services from this page)*

Some other content is available on our Facebook page

 **White Waltham Church**

*We hope you can join us!*



## Community News for White Waltham & Woodlands Park

Published every 3 weeks or so, and available on  
White Waltham Church's Facebook page and website:

 **White Waltham Church**  
[www.stmaryswhitewaltham.org.uk](http://www.stmaryswhitewaltham.org.uk)

*If you have news about something going in our local community  
that you would like to be included please email:*

**waltham.vicar@btinternet.com**